

# WHY CHOOSE CENTRIFUSE®?

## Genuine CentriFuse® HIGH PERFORMANCE BRAKE DRUMS



## WHY CHOOSE CENTRIFUSE®?

- **SAFETY** ensured by CentriFuse® Steel Jacket Technology
- **LONGER LIFE** provided by Patented Alloy Braking Surface
- **PROVEN PERFORMANCE** with over 80 Years in the Industry
- **IMPROVE MPG** or Increase Revenue-Producing Payload
- **LIGHTEST WEIGHT** brake drums in the industry!



MADE IN USA

# CENTRIFUSE® WEIGHT SAVINGS, FEATURES & BENEFITS

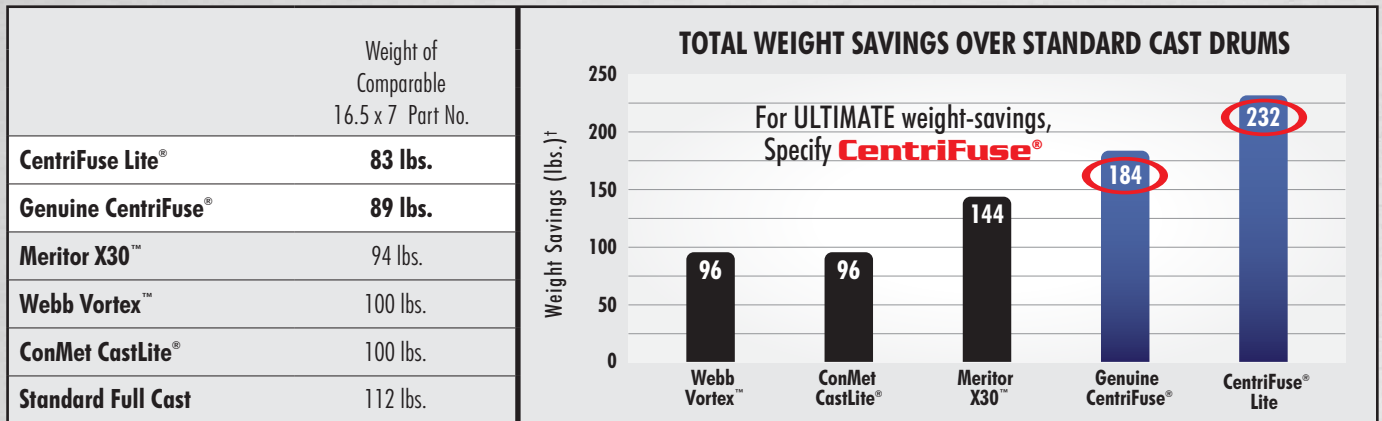
## CENTRIFUSE® IS GOING BLUE

Effective October 1, 2015, the color of the brake drum changes from black to STEMCO blue for all CentriFuse® Brake Drums except for CentriFuse HD®, which will remain STEMCO red. The change to blue paint does not affect the fit, form, function or performance of STEMCO CentriFuse® Brake Drums. All part numbers will remain the same, as will the superior quality and performance that you have trusted for over 80 years.

## Why Did CentriFuse® Go Blue?

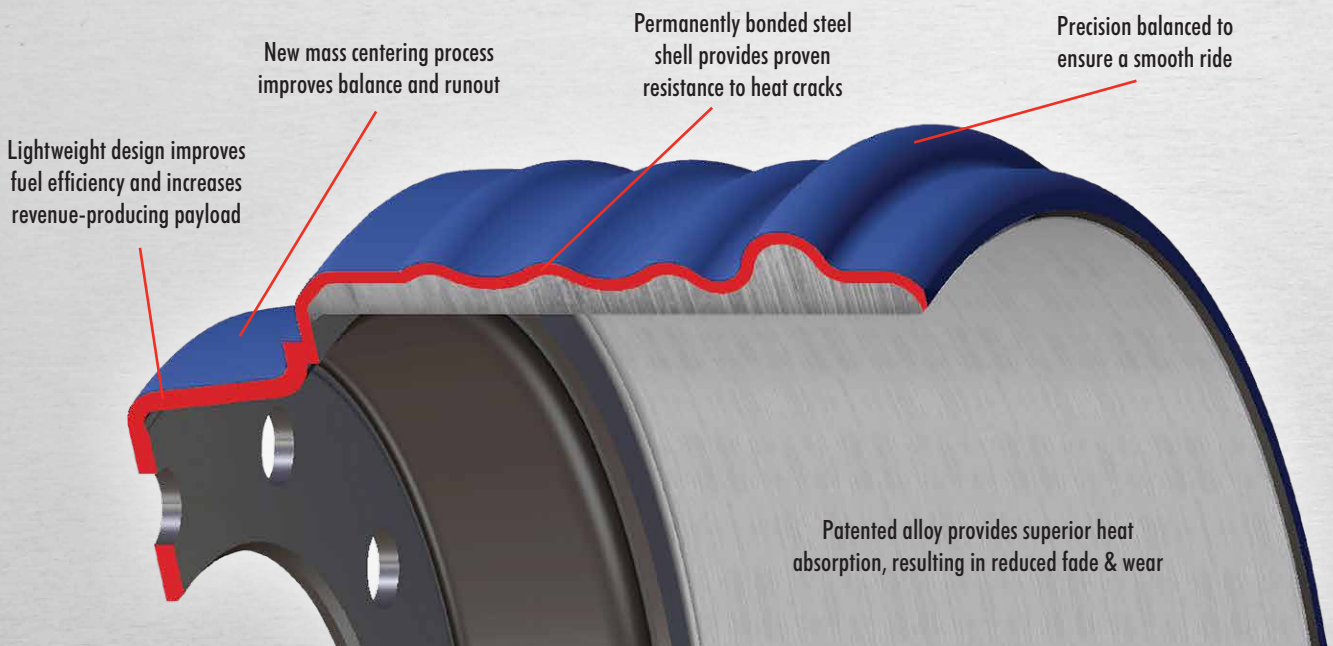
The purpose for this change is to further differentiate the performance and quality of the CentriFuse® product, and to protect the integrity of STEMCO customers' investment in CentriFuse® technology. With offshore imitation and look-a-like drums targeting the industry, STEMCO must ensure that customers are getting the proven quality, reliability, safety, performance, and weight reduction they have come to expect when purchasing Genuine CentriFuse® Brake Drums.

## WEIGHT SAVINGS

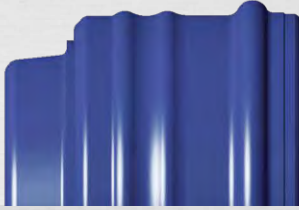


† Weight comparison based on 16.5 x 7 drums on tandem axle tractor with tandem axle trailer. X30™ is a trademark of ArvinMeritor. Vortex™ is a trademark of Webb Wheel Products. CastLite® is a registered trademark of ConMet.

## THE DIFFERENCE IS IN THE DETAILS



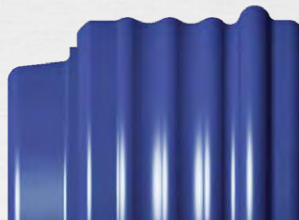
## STEEL SHELL FOR SAFETY



### CentriFuse® Lite

The **LIGHTEST** brake drum available in the industry!

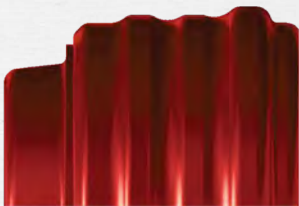
- 83 lbs. (16.5" x 7")
- 20,000 Axle Load Rating
- Weight Sensitive Applications
- 10-Year Written Warranty



### Original CentriFuse®

**Proven Performance for All Applications**

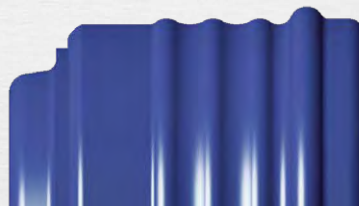
- 89 lbs. (16.5" x 7") – Many more sizes available!
- 23,000 Axle Load Rating
- The Trusted Brand with Over 80 Years of Excellence!
- 10-Year Written Warranty



### CentriFuse® HD

**For Long Life, Safety & Durability in Severe Service Applications**

- 100 lbs. (16.5" x 7"), 104 lbs. (16.5" x 8"), 111 lbs. (16.5" x 8.62")
- 26,000 Axle Load Rating
- Specifically Engineered for Heavy Haul, Multi-stop, and Rugged Terrain
- 3-Year Severe Service Written Warranty



### CentriFuse® Wide Brake

**Lightweight Solution for Maximum Brake Life**

- 90 lbs. (16.5" x 8"), 100 lbs. (16.5" x 8.62")
- 23,000 Axle Load Rating
- Available in 16.5" x 8" and 16.5" x 8.62"
- 10-Year Written Warranty

## CentriFuse® is an Engineered Product

With the Right Material – In the Right Place – For the Right Reason!

# BRAKE DRUM MOUNTING PROCEDURES

## CentriFuse

HIGH PERFORMANCE BRAKE DRUM & HUB ASSEMBLIES



## THE INDUSTRY'S LIGHTEST AND STRONGEST HUBS AND DRUMS

COME TOGETHER IN A PERFECT MATCH

Select one of these high-quality trailer hubs to pair with your choice of our Genuine CentriFuse® High Performance Brake Drums:

### LIGHTWEIGHT HUBS

- Lighter and stronger than aluminum with fewer maintenance issues
- Industry-leading lubricant capacity extends bearing and seal life
- Interior and exterior of hubs are E-coated for 1,000 hours of salt spray protection, resulting in the industry's cleanest oil cavities

### DUCTILE IRON HUBS

- Lightest standard ductile iron hubs on the market
- Durable and damage resistant
- Industry-leading lubricant capacity extends bearing and seal life
- Interior and exterior of hubs are E-coated for 1,000 hours of salt spray protection, resulting in the industry's cleanest oil cavities

### CENTRIFUSE® BRAKE DRUMS

- Steel jacket increases safety
- Patented alloy braking surface reduces fade and wear
- CentriFuse® Lite  
16.5x7 83lbs.
- Original CentriFuse®  
16.5x7 89lbs.
- CentriFuse® Wide Brake  
16.5x8 90lbs.  
16.5x8.62 100lbs.

### HUB AND DRUM ASSEMBLY BENEFITS:

- Improve MPG with up to 152 pounds of weight savings per trailer!
- FMVSS-121 compliant, meets or exceeds OEM and SAE standards.
- Specify our Lightweight Hub and Drum assembly with STEMCO bearings and high performance wheel end seals, hub cap, and PRO-TORQ® spindle nut to get our industry-leading 7-year wheel end package warranty.

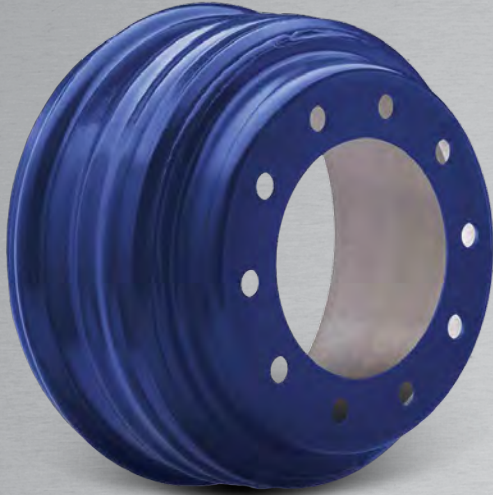


MADE IN USA

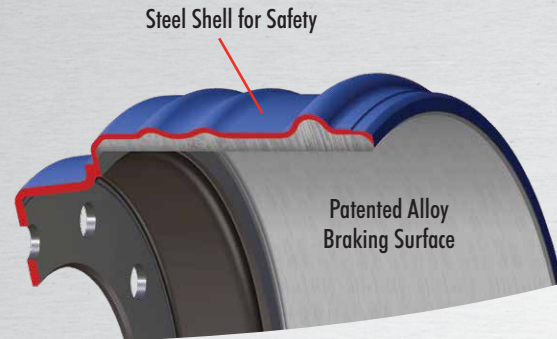
# CENTRIFUSE® LITE FEATURES & BENEFITS

## CentriFuse® Lite

HIGH PERFORMANCE BRAKE DRUMS



### ADVANCED BRAKING TECHNOLOGY



## GET THE SAFETY OF CENTRIFUSE®, ALONG WITH THE LIGHTEST BRAKE DRUM IN THE INDUSTRY.

- Industry exclusive steel jacketed 83 lb. CentriFuse® Lite offers up to 232 pounds of weight savings per tractor/trailer combination
- Improve MPG or increase revenue-producing payload
- You get the same proven performance, safety, balance and reliability you trust with Original CentriFuse®
- Lower maintenance costs with CentriFuse® patented alloy braking surface engineered to provide superior heat absorption, resulting in reduced brake fade and wear
- Increase safety with CentriFuse® Steel Jacket technology
- Precision balanced for extended tire life
- Backed by industry leading 10 year written warranty
- Approved OEM component for axle load ratings of 20,000 lbs.



MADE IN USA

# CENTRIFUSE® LITE FEATURES & BENEFITS

## CentriFuse® Lite HIGH PERFORMANCE BRAKE DRUMS

### SAFETY AT THE LIGHTEST WEIGHT

#### APPLICATIONS

CentriFuse® Lite is ideal for Weight Sensitive applications, such as:

- Refrigerated Fleets
- Tanker Fleets
- Bulk Haulers
- Any fleets looking to increase their payload and fuel efficiency



#### WEIGHT SAVINGS

Save up to 232 lbs. using CentriFuse® Lite!

	Weight of Comparable 16.5 x 7 Part No.	CENTRIFUSE® LITE WEIGHT SAVINGS			
		VERSUS			
		X30™	Vortex™	CastLite®	Cast
<b>CentriFuse Lite®</b>	<b>83 lbs.</b>	88 lbs.	136 lbs.	136 lbs.	232 lbs.
<b>Meritor X30™</b>	94 lbs.	Weight comparison based on 16.5 x 7 drums on tandem axle tractor with tandem axle trailer.  <small>X30™ is a trademark of ArvinMeritor. Vortex™ is a trademark of Webb Wheel Products. CastLite® is a registered trademark of ConMet.</small>			
<b>Webb Vortex™</b>	100 lbs.				
<b>ConMet CastLite®</b>	100 lbs.				
<b>Standard Full Cast</b>	112 lbs.				

### CentriFuse® is an Engineered Product

With the Right Material – In the Right Place – For the Right Reason!



MADE IN USA

# CENTRIFUSE® HD FEATURES & BENEFITS

## CentriFuse® HD SEVERE SERVICE BRAKE DRUMS



### NEED LONGER BRAKE DRUM AND LINING LIFE? YOUR SEVERE SERVICE SOLUTION

*For long life, safety and durability in demanding severe service applications.*

When it comes to the quality and performance of your brake system, it's your choice. With STEMCO CentriFuse HD Severe Service Brake Drums, you'll be making the decision to fit the best quality, highest performing product available. Engineered and manufactured in the USA to specifically meet the demands of severe service applications like refuse and construction, or where heavy loads need maximum braking performance. Today's fleets demand CentriFuse HD because they're the safest, lightest and longest lasting brake drum.

- Increase safety with CentriFuse HD steel-jacketed drum load rated up to 26,000 lbs.
- Lower maintenance costs and reduce vehicle weight
- Patented Alloy braking surface engineered to provide superior heat absorption, resulting in reduced brake fade and wear
- Precision balanced for extended tire life
- Specifically engineered for heavy haul, multi-stop, and rugged or mountainous terrain



MADE IN USA

# CENTRIFUSE® HD FEATURES & BENEFITS

## DEMAND STEMCO CENTRIFUSE® HD FOR SEVERE CONDITIONS



### CentriFuse® HD HIGH PERFORMANCE SEVERE SERVICE BRAKE DRUMS

**Type:** Original Steel Shell  
**Weight:** 100 lbs.  
**Metallurgy:** Patented Iron, High Alloy  
**Durability:** ★★★★★  
**Warranty:** 3 Years

### OTHER BRANDS

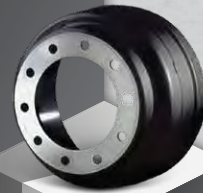
#### HEAVY DUTY CAST

**Type:** Full Cast  
**Weight:** 131 lbs.  
**Metallurgy:** Generic Grey Iron  
**Durability:** ★★★  
**Warranty:** 1 Year



#### STANDARD FULL CAST

**Type:** Full Cast  
**Weight:** 112 lbs.  
**Metallurgy:** Generic Grey Iron  
**Durability:** ★★  
**Warranty:** 1 Year



### CROSS REFERENCE

#### 16.5" x 7"

MFR	PART #	WEIGHT
CentriFuse® HD	<b>600004HD</b>	<b>100</b>
Meritor	123207	112
Meritor	123365	122
Gunite	3401	115
Gunite	3600A/AX	112
Gunite	3576/X	131
Webb	66864/B	112
Webb	66884/B	119
Webb	78502B	120

#### 16.5" x 8"

MFR	PART #	WEIGHT
CentriFuse® HD	<b>600013HD</b>	<b>104</b>
Gunite	3782	123
Gunite	3891	135
Meritor	123520	124
Webb	66800	119
Webb	66808	119
Webb	78501B	123
Webb	78504B	123

#### 16.5" x 8.62"

MFR	PART #	WEIGHT
CentriFuse® HD	<b>600014HD</b>	<b>111</b>
ConMet	10025912	137
Gunite	3807	127
Gunite	3811	157
Gunite	3890	133
Meritor	123570	138
Webb	66809	120
Webb	66854	121
Webb	66855	121
Webb	78500B	127
Webb	78505B	127



MADE IN USA

# CENTRIFUSE® BRAKE DRUM SPECIFICATIONS BY BRAKE SIZE

## HIGH PERFORMANCE BRAKE DRUMS



### SPECIFICATIONS

MTG. TYPE	CENTRIFUSE DRUM PART NO.	BRAKE SIZE	WT. LB.	OVERALL DEPTH	BRAKE SURF. WIDTH	HUB PILOT DIA.	BOLT CIRCLE DIA.	NO. BOLT HOLES	BOLT HOLE DIA.	DRUM BACK NO.	DRUM BAND NO.	SPECIAL INFORMATION
0	90089BK	15 x 4	64	8.54	4.58	8.78	285.75	10	1.25	91294	91028	
0	91137BK	15 x 4	64	8.63	4.54	8.78	285.75	10	0.96	91136	91028	CA
0	87945BK	15 x 4	65	8.94	4.60	8.53	11.25	10	1.25	91024	91028	
0	88870BK	15 x 4	64	8.94	4.60	9.00	275	8	0.92	91025	91028	Replaces 85369, 85831, 86140, 86909
0	89870BK	15 x 4	65	8.94	4.60	8.78	285.75	10	1.25	91026	91028	
0	90660BK	15 x 4	64	8.94	4.60	8.78	285.75	10	0.96	91029	91028	
0	90174B	15 x 5	78	9.53	5.81	8.78	285.75	10	1.25	90173	87311	
0	91438B	15 x 8.62	90	11.19	9.11	9.00	275	8	0.92	91439	91480	For industry axles except Meritor TN
0	91482B	15 x 8.62	90	11.19	9.11	8.78	285.75	10	0.96	91481	91480	For industry axles except Meritor TN
0	91723B	15 x 8.62	90	11.44	9.11	9.00	275	8	0.92	91722	91480	For Meritor TN axle only
0	91725B	15 x 8.62	90	11.44	9.11	8.78	285.75	10	0.96	91724	91480	For Meritor TN or TB axle only
0	88739B	16.5 x 5	74	8.59	5.87	8.53	11.25	10	1.25	88435	87369	CA
0	90137B	16.5 x 5	74	8.59	5.87	8.78	285.75	10	1.25	91507	87369	
0	600001	16.5 x 5	75	8.88	5.46	8.78	285.75	10	1.25	90599	87369	
0	88814B	16.5 x 5	76	9.21	5.83	9.00	275	8	0.92	88810	87369	CA
0	90600B	16.5 x 5	76	9.22	5.82	8.78	285.75	10	1.25	90599	87369	0.375 thick mounting
0	600027	16.5 x 5	78	9.22	5.82	8.78	285.75	10	1.25	620020	87369	OEM specified drum
0	88507B	16.5 x 5	77	9.53	5.81	8.53	11.25	10	1.25	88508	87369	CA

Continued on Next Page



# CENTRIFUSE® BRAKE DRUM SPECIFICATIONS BY BRAKE SIZE

## HIGH PERFORMANCE BRAKE DRUMS

**SAFETY ■ LONGER LIFE ■ PROVEN PERFORMANCE ■ LIGHTEST WEIGHT ■ IMPROVED MPG**

### SPECIFICATIONS (cont.)

MTG. TYPE	CENTRIFUSE DRUM PART NO.	BRAKE SIZE	WT. LB.	OVER ALL DEPTH	BRAKE SURE WIDTH	HUB PILOT DIA.	BOLT CIRCLE DIA.	NO. BOLT HOLES	BOLT HOLE DIA.	DRUM BACK NO.	DRUM BAND NO.	SPECIAL INFORMATION
0	91265B	16.5 x 6	88	9.62	6.68	8.78	285.75	10	1.25	91264	87298	Replaces 91049B
I	87415B	16.5 x 7	85	8.66	7.64	9.50	11.25	10	0.81	87416	87105	Replaces 85130 & 86134
I	87407B	16.5 x 7	85	9.66	7.58	9.44	11.25	10	0.81	88152	87105	Replaces 85369, 85831, 86140, 86909
0	89651B	16.5 x 7	88	10.04	7.24	9.00	275	8	0.92	88798	87298	
0	87295B	16.5 x 7	88	10.04	7.27	8.53	11.25	10	0.81	91611	87298	
0	89877B	16.5 x 7	88	10.04	7.27	8.78	285.75	10	0.96	91538	87298	
0	600004HD	16.5 x 7	100	10.41	7.64	8.78	285.75	10	0.96	91538	610021	CentriFuse® HD
0	600084	16.5 x 7	83	10.41	7.64	8.78	285.75	10	0.96	91538	610001	CentriFuse® Lite
0	89996B	16.5 x 7	89	10.41	7.64	8.78	285.75	10	0.96	91538	87105	
0	87101B	16.5 x 7	89	10.41	7.64	8.53	11.25	10	0.81	91611	87105	Replaces 86879
0	87156B	16.5 x 7	90	10.41	7.64	9.00	11.25	10	0.81	87157	87105	Replaces 86232
0	88797B	16.5 x 7	89	10.41	7.64	9.00	275	8	0.92	88798	87105	
0	600013HD	16.5 x 8	104	10.91	8.55	8.78	285.75	10	0.96	91793	610023	CentriFuse® HD
0	91792B	16.5 x 8	90	10.91	8.55	8.78	285.75	10	0.96	91793	91795	
0	600014HD	16.5 x 8.62	111	11.34	9.10	8.78	285.75	10	0.96	91813	610025	0.375 thick mounting, CentriFuse® HD
0	600026	16.5 x 8.62	100	11.34	9.10	8.78	285.75	10	0.96	91813	610029	0.375 thick mounting, Replaces 91812B
0	89467B	16.5 x 8.62	95	11.89	9.10	8.53	11.25	10	0.81	91611	610029	
0	90434B	16.5 x 8.62	95	11.89	9.10	8.78	285.75	10	0.96	91538	610029	
0	89571B	16.5 x 8.62	97	12.15	9.36	9.00	275	8	0.92	88798	87618	
0	87615B	16.5 x 8.62	95	12.15	9.36	8.53	11.25	10	0.81	91611	87618	Replaces 86889
0	90486B	16.5 x 8.62	97	12.15	9.36	8.78	285.75	10	0.96	91538	87618	

**NOTES:** All CentriFuse Drums are Balanced  
 I = Inboard Mounted Drum  
 O = Outboard Mounted Drum  
 CA = Check Availability  
 CentriFuse Drum mounting face is 0.25" thick unless otherwise noted.

# CENTRIFUSE® DRUM & LIGHTWEIGHT HUB ASSEMBLIES

## HIGH PERFORMANCE BRAKE DRUM & LIGHTWEIGHT HUB ASSEMBLIES

These Lightweight Assemblies qualify as a part of STEMCO's Platinum Performance System™ Plus 7. Please see page 2 for details.



### Hub Piloted System: 10 Hole, 285.75mm Bolt Circle (CLN)

LIGHTWEIGHT ASSEMBLY PART # (GENERAL CUPS)	LIGHTWEIGHT ASSEMBLY PART # (STEMCO CUPS)	BRAKE SIZE	WHEEL USAGE	ABS	HUB WEIGHT	ASSEMBLY WEIGHT	LIGHTWEIGHT HUB PART # (GENERAL CUPS)	LIGHTWEIGHT HUB PART # (STEMCO CUPS)	CENTRIFUSE® DRUM PART #	CENTRIFUSE® DRUM TYPE	
<b>N TYPE TAPERED TRAILER AXLE BEARINGS:</b>											
Inner/Outer Cups: HM218210/HM212011					Cones: HM218248/HM212049				Seal O.D.: 6.00		
400170	400170SC	16.5 x 7	Steel	Non	31	120	00114002	20114002	89996B	Original CentriFuse®	
440170	440170SC	16.5 x 7	Steel	ABS	32	121	00114102	20114102	89996B	Original CentriFuse®	
400171	400171SC	16.5 x 7	Alum	Non	32	121	00114001	20114001	89996B	Original CentriFuse®	
440171	440171SC	16.5 x 7	Alum	ABS	33	122	00114101	20114101	89996B	Original CentriFuse®	
400172	400172SC	16.5 x 7	Steel	Non	31	114	00114002	20114002	600084	CentriFuse® Lite	
440172	440172SC	16.5 x 7	Steel	ABS	32	115	00114102	20114102	600084	CentriFuse® Lite	
400173	400173SC	16.5 x 7	Alum	Non	32	115	00114001	20114001	600084	CentriFuse® Lite	
440173	440173SC	16.5 x 7	Alum	ABS	33	116	00114101	20114101	600084	CentriFuse® Lite	
400174	400174SC	16.5 x 8.62	Steel	Non	31	131	00114002	20114002	600026*	CentriFuse® Wide	
440174	440174SC	16.5 x 8.62	Steel	ABS	32	132	00114102	20114102	600026*	CentriFuse® Wide	
400175	400175SC	16.5 x 8.62	Alum	Non	32	132	00114001	20114001	600026*	CentriFuse® Wide	
440175	440175SC	16.5 x 8.62	Alum	ABS	33	133	00114101	20114101	600026*	CentriFuse® Wide	
400182	400182SC	16.5 x 8	Steel	Non	31	121	00114002	20114002	91792B	CentriFuse® Wide	
440182	440182SC	16.5 x 8	Steel	ABS	32	122	00114102	20114102	91792B	CentriFuse® Wide	
400183	400183SC	16.5 x 8	Alum	Non	32	122	00114001	20114001	91792B	CentriFuse® Wide	
440183	440183SC	16.5 x 8	Alum	ABS	33	123	00114101	20114101	91792B	CentriFuse® Wide	
<b>P TYPE PARALLEL TRAILER AXLE BEARINGS:</b>											
Inner/Outer Cups: HM518410/HM518410					Cones: HM518445/HM518445				Seal O.D.: 6.00		
400176	400176SC	16.5 x 7	Steel	Non	33	122	00112002	20112002	89996B	Original CentriFuse®	
440176	440176SC	16.5 x 7	Steel	ABS	34	123	00112102	20112102	89996B	Original CentriFuse®	
400177	400177SC	16.5 x 7	Alum	Non	34	123	00112001	20112001	89996B	Original CentriFuse®	
440178	440177SC	16.5 x 7	Alum	ABS	35	124	00112101	20112101	89996B	Original CentriFuse®	
400178	400178SC	16.5 x 7	Steel	Non	33	116	00112002	20112002	600084	CentriFuse® Lite	
440178	440178SC	16.5 x 7	Steel	ABS	34	117	00112102	20112102	600084	CentriFuse® Lite	
400179	400179SC	16.5 x 7	Alum	Non	34	117	00112001	20112001	600084	CentriFuse® Lite	
440179	440179SC	16.5 x 7	Alum	ABS	35	118	00112101	20112101	600084	CentriFuse® Lite	
400180	400180SC	16.5 x 8.62	Steel	Non	33	133	00112002	20112002	600026*	CentriFuse® Wide	
440180	440180SC	16.5 x 8.62	Steel	ABS	34	134	00112102	20112102	600026*	CentriFuse® Wide	
400181	400181SC	16.5 x 8.62	Alum	Non	34	134	00112001	20112001	600026*	CentriFuse® Wide	
440181	440181SC	16.5 x 8.62	Alum	ABS	35	135	00112101	20112101	600026*	CentriFuse® Wide	
400184	400184SC	16.5 x 8	Steel	Non	33	123	00112002	20112002	91792B	CentriFuse® Wide	
440184	440184SC	16.5 x 8	Steel	ABS	34	124	00112102	20112102	91792B	CentriFuse® Wide	
400185	400185SC	16.5 x 8	Alum	Non	34	124	00112001	20112001	91792B	CentriFuse® Wide	
440185	440185SC	16.5 x 8	Alum	ABS	35	125	00112101	20112101	91792B	CentriFuse® Wide	

Each Hub & Drum Assembly comes with two M22 x 1.5 Wheel Nuts.

\*Replaces part number 91812B.



MADE IN USA

# CENTRIFUSE® DRUM & DUCTILE IRON HUB ASSEMBLIES

## HIGH PERFORMANCE BRAKE DRUM & DUCTILE IRON HUB ASSEMBLIES

Hubs are also available for sale individually. Please use Hub Part Number to order.

### Hub Piloted System: 10 Hole, 285.75mm Bolt Circle (CLN)

HUB & DRUM ASSEMBLY PART # (GENERAL CUPS)	HUB & DRUM ASSEMBLY PART # (STEMCO CUPS)	BRAKE SIZE	WHEEL USAGE	ABS	HUB WEIGHT	ASSEMBLY WEIGHT	DUCTILE HUB PART # (GENERAL CUPS)	DUCTILE HUB PART # (STEMCO CUPS)	CENTRIFUSE® DRUM PART #	CENTRIFUSE® DRUM TYPE
<b>N TYPE TAPERED TRAILER AXLE</b>										
<b>BEARINGS:</b>										
Inner/Outer Cups: HM218210/HM212011					Cones: HM218248/HM212049				Seal O.D.: 6.00	
400158	400158SC	16.5 x 7	Steel	Non	42	131	00106002	20106002	89996B	Original CentriFuse®
440158	440158SC	16.5 x 7	Steel	ABS	43	132	00106102	20106102	89996B	Original CentriFuse®
400159	400159SC	16.5 x 7	Alum	Non	44	133	00106001	20106001	89996B	Original CentriFuse®
440159	440159SC	16.5 x 7	Alum	ABS	45	134	00106101	20106101	89996B	Original CentriFuse®
400160	400160SC	16.5 x 7	Steel	Non	42	125	00106002	20106002	600084	CentriFuse® Lite
440160	440160SC	16.5 x 7	Steel	ABS	43	126	00106102	20106102	600084	CentriFuse® Lite
400161	400161SC	16.5 x 7	Alum	Non	44	127	00106001	20106001	600084	CentriFuse® Lite
440161	440161SC	16.5 x 7	Alum	ABS	45	128	00106101	20106101	600084	CentriFuse® Lite
400162	400162SC	16.5 x 8.62	Steel	Non	42	142	00106002	20106002	600026*	CentriFuse® Wide
440162	440162SC	16.5 x 8.62	Steel	ABS	43	143	00106102	20106102	600026*	CentriFuse® Wide
400163	400163SC	16.5 x 8.62	Alum	Non	44	144	00106001	20106001	600026*	CentriFuse® Wide
440163	440163SC	16.5 x 8.62	Alum	ABS	45	145	00106101	20106101	600026*	CentriFuse® Wide
<b>P TYPE PARALLEL TRAILER AXLE</b>										
<b>BEARINGS:</b>										
Inner/Outer Cups: HM518410/HM518410					Cones: HM518445/HM518445				Seal O.D.: 6.00	
400164	400164SC	16.5 x 7	Steel	Non	45	134	00161002	20161002	89996B	Original CentriFuse®
440164	440164SC	16.5 x 7	Steel	ABS	46	135	00161102	20161102	89996B	Original CentriFuse®
400165	400165SC	16.5 x 7	Alum	Non	47	136	00161001	20161001	89996B	Original CentriFuse®
440165	440165SC	16.5 x 7	Alum	ABS	48	137	00161101	20161101	89996B	Original CentriFuse®
400166	400166SC	16.5 x 7	Steel	Non	45	128	00161002	20161002	600084	CentriFuse® Lite
440166	440166SC	16.5 x 7	Steel	ABS	46	129	00161102	20161102	600084	CentriFuse® Lite
400167	400167SC	16.5 x 7	Alum	Non	47	130	00161001	20161001	600084	CentriFuse® Lite
440167	440167SC	16.5 x 7	Alum	ABS	48	131	00161101	20161101	600084	CentriFuse® Lite
400168	400168SC	16.5 x 8.62	Steel	Non	45	145	00161002	20161002	600026*	CentriFuse® Wide
440168	440168SC	16.5 x 8.62	Steel	ABS	46	146	00161102	20161102	600026*	CentriFuse® Wide
400169	400169SC	16.5 x 8.62	Alum	Non	47	147	00161001	20161001	600026*	CentriFuse® Wide
440169	440169SC	16.5 x 8.62	Alum	ABS	48	148	00161101	20161101	600026*	CentriFuse® Wide

Each Hub & Drum Assembly comes with two M22 x 1.5 Wheel Nuts.

\*Replaces part number 91812B.



MADE IN USA

# BRAKE DRUM MANUFACTURERS INTERCHANGE

## BRAKE DRUM MANUFACTURERS INTERCHANGE

MERITOR (DAYTON / X30)	LBS.	CENTRIFUSE®	LBS.	GUNITE	LBS.	CENTRIFUSE®	LBS.	WEBB	LBS.	CENTRIFUSE®	LBS.	CONMET	LBS.	CENTRIFUSE®	LBS.
122453	112	87295B	88	2546B	100	87417B	86	61527	70	91137BK	64	107150	112	89996B	89
122505	73	88115B	64	2983C	108	87397B	84	61528	70	89870BK	65	107164	80	89870BK	65
122550	106	87156B	90	3018A	113	87415B	85	61571	106	87128B	90	107193	109	91265B	88
122607	117	87101B	89	3097A	98	90172B	89	64483	75	88115B	64	107453	94	90600B	76
123207	112	89996B	89	3141	105	87156B	90	65152	122	91265B	88	107507	71	90089BK	64
123254	69	90089BK	64	3141B	105	88797B	89	65157	111	89855B	79	107637	119	91792B	90
123365	122	60004HD	100	3166	115	87101B	89	65162	123	91265B	88	107638	124	600026	100
123366	70	91137BK	64	3219	106	87128B	90	65163B	119	90600B	76	107865	110	91723B	90
123383	83	90600B	76	3219A	106	90148B	90	65541B	80	88114B	64	107866	117	91725B	90
123399	107	91265B	88	3401	115	60004HD	100	65543	80	88870BK	64	107875	112	88797B	89
123400	105	91265B	88	3402	111	89877B	88	65545	68	90660BK	64	107885	110	89877B	88
123406	142	90486B	97	3402A	111	89651B	88	65547	82	90089BK	64	107902	80	88870BK	64
123409	123	88797B	89	3483	106	87101B	89	65548	78	89870BK	65	107904	112	87156B	90
123448	74	89870BK	65	3573X	98	600001	75	65550	85	87945BK	65	10001776	100	89996B	89
123463	97	90600B	76	3574	80	87945BK	65	65554	83	89870BK	65	10001777	100	87156B	90
123520	128	600013HD	104	3576	131	60004HD	100	65739	95	88739B	74	10001778	100	89996B	89
123570	138	600014HD	111	3596	79	90089BK	64	66353	110	600013HD	104	10001779	100	87156B	90
53-123512-002	62	90089BK	64	3598	96	90600B	76	66800	119	91792B	90	10001781	68	89870BK	65
53-123519-002	87	87397B	84	3598A	96	88814B	76	66808	119	600013HD	104	10001783	67	90089BK	64
53-123535-002	95	91792B	90	3598B	96	90600B	76	66809	120	600014HD	111	10001800	112	89996B	89
53-123537-002	94	89996B	89	3600A	112	89996B	89	66811	130	89467B	95	10001801	112	88797B	89
53-123542-002	63	89870BK	65	3610	82	88115B	64	66814	132	90486B	97	10001802	100	89877B	88
53-123544-002	102	600026	100	3630	101	90600B	76	66815	133	87615B	95	10001803	112	87156B	90
53-123564-002	94	87101B	89	3647X	114	600013HD	104	66816	136	89571B	97	10005331	82	600001	75
53-123565-002	93	87156B	90	3687	108	91265B	88	66827B	130	600014HD	111	10005332	83	90600B	76
53-123566-002	93	88797B	89	3699	128	87295B	88	66834	129	90434B	95	10009830	112	89996B	89
53-123567-002	63	91137BK	64	3710	96	600001	75	66852	115	87295B	88	10009920	80	89870BK	65
53-123568-002	64	90660BK	64	3721AX	79	90089BK	64	66854	120	600026	100	10012097	121	600026	100
53-123575-002	64	88870BK	64	3721X	79	90089BK	64	66864	112	89996B	89	10014756	93	90600B	76
53-123579-002	106	89571B	97	3726X	79	89870BK	65	66873	108	89877B	88	10020147	91	600001	75
53-123580-002	106	87615B	95	3741X	79	88870BK	64	66875	110	88797B	89	10025912	137	600014HD	111
53-123581-002	106	90486B	97	3744X	105	91725B	90	66878	109	89651B	88	10026002	94	88814B	76
53-123582-002	91	87295B	88	3757	114	600013HD	104	66884	117	600004HD	100	10030774	105	89996B	89
53-123583-002	89	89877B	88	3758X	96	90600B	76	66892	111	87295B	88	10033071	103	91265B	88
53-123584-002	*	89651B	88	3782	123	91792B	90	66893	113	87101B	89	10033314	113	600026	100
53-123585-002	*	87407B	85	3800X	79	89870BK	65	66895	110	87156B	90	10037991	106	91265B	88
53-123586-002	*	87417B	86	3807	127	600026	100	67518	98	87397B	84				
53-123587-002	*	87415B	85	3807A	127	600026	100	68730	101	87415B	85				
53-123588-002	79	88814B	76	3811	157	600014HD	111	68921	112	87417B	86				
53-123589-002	79	90600B	76	**3890	133	600014HD	111	78500	127	600014HD	111				
53-123591-002	80	90148B	90	**3891	135	600013HD	104	78501	123	600013HD	104				
53-123592-002	80	87128B	90	3922	105	89996B	89	78502	120	600004HD	100				
53-123594-002	*	91655B	90	**9000X	66	90089BK	64	78504	123	600013HD	104				
53-123595-002	*	88114B	64	**9001X	69	89870BK	65	78505	127	600014HD	111				
53-123596-002	*	89467B	95	**9002X	80	90137B	74	76864B	102	600084	83				
53-123597-002	*	90434B	95	**9006X	94	89996B	89	77528B	64	88114B	64				
53-123598-002	70	90174B	78	**9014X	90	87407B	85	77710B	79	90600B	76				
53-123599-002	70	90176B	78	**9015X	89	87415B	85	77800BW	117	91792B	90				
53-123600-002	70	90174B	78	**9016X	70	88870BK	64	77807BW	109	89996B	89				
53-123601-002	91	91725B	90	**9019X	107	600026	100	77808BW	118	91792B	90				
53-123602-002	91	91723B	90	**9020X	105	91792B	90	77809BW	120	600026	100				
53-123603-002	*	91482B	90	**9021X	96	87101B	89	77854BW	119	600026	100				
53-123604-002	*	91438B	90	**9022X	94	87295B	88	77864BW	109	89996B	89				
53-123605-002	77	88739B	74	**9035X	64	90089BK	64								
53-123606-002	77	90137B	74	**9036X	98	89877B	88								
53-123607-002	87	91265B	88	**9041X	99	87156B	90								
53-123608-002	87	91265B	88	**9041BX	99	88797B	89								
53-123609-002	93	87945BK	65												
53-123627-002	86	600001	75												
53-123771-002	103	600026	100												
53-123815-002	79	90600B	76												
53-123816-002	79	600001	75												

Webb part numbers  
ending in B = Balanced

Gunite part numbers  
ending in X = Balanced

\*\* Gunite Gold Part Numbers

\* Weight unavailable,  
part number no longer published.

# CENTRIFUSE® DRUM BACK & BAND TO DRUM PART NUMBER

## DRUM BACK & DRUM BAND TO CENTRIFUSE DRUM PART NUMBER

DRUM BACK NUMBER	CENTRIFUSE® DRUM PART NUMBER
87157	87156B
87416	87415B
87418	87417B
87438	89855B
88116	88114B
88117	88115B
88152	87407B
88253	87397B
88435	88739B
88508	88507B
88798	88797B
88798	89571B
88798	89651B
88810	88814B
89873	89874B
90170	90172B
90173	90174B
90175	90176B
90599	600001
90599	90600B
91008	87128B
91024	87945BK
91025	88870BK
91026	89870BK
91029	90660BK
91136	91137BK
91264	91265B
91293	90148B
91294	90089BK
91439	91438B
91481	91482B
91507	90137B
91538	600004HD
91538	600084
91538	89877B
91538	89996B
91538	90434B
91538	90486B
91611	87101B
91611	87295B
91611	87615B
91611	89467B
91654	91655B
91722	91723B
91724	91725B
91793	600013HD
91793	91792B
91813	600014HD
91813	600026
91813	91812B



**CentriFuse® is an Engineered Product**  
 With the Right Material – In the Right Place –  
 For the Right Reason!

DRUM BAND NUMBER	CENTRIFUSE® DRUM PART NUMBER
610001	600084
610003	600004HD
610021	600004HD
610023	600013HD
610025	600014HD
610029	600026
87105	87101B
87105	87156B
87105	87407B
87105	87415B
87105	87417B
87105	88797B
87105	89996B
87132	87128B
87132	90148B
87132	90172B
87132	91655B
87298	87295B
87298	87397B
87298	89651B
87298	89877B
87298	91265B
87311	90174B
87311	90176B
87369	600001
87369	600027
87369	88507B
87369	88739B
87369	88814B
87369	89874B
87369	90137B
87369	90600B
87618	87615B
87618	89467B
87618	89571B
87618	90434B
87618	90486B
87618	91812B
89852	89855B
91028	87945BK
91028	88114B
91028	88115B
91028	88870BK
91028	89870BK
91028	90089BK
91028	90660BK
91028	91137BK
91480	91438B
91480	91482B
91480	91723B
91480	91725B
91795	91792B